
Report To:	The Inverclyde Council	Date: 27 September 2018
Report By:	Corporate Director, Environment, Regeneration and Resources	Report No: LP/101/18
Contact Officer:	Caroline Ross	Contact No: 712115
Subject:	Proposed Traffic Regulation Order – The Inverclyde Council, Disabled Persons’ Parking Places (On Street) Order No. 2 2018	

1.0 PURPOSE

- 1.1 The purpose of this report is to request the Council to consider a remit from the Environment & Regeneration Committee.

2.0 SUMMARY

- 2.1 The Environment & Regeneration Committee held on 30 August, 2018 after consideration of a report by the Corporate Director Environment, Regeneration & Resources on the proposed Traffic Regulation Order – The Inverclyde Council, Disabled Persons’ Parking Places (On Street) Order No. 2 2018 recommended that the Inverclyde Council be asked to make the Traffic Regulation Order and to remit it to the Head of Environmental and Public Protection and the Head of Legal and Property Services to arrange for its implementation.

3.0 RECOMMENDATION

- 3.1 That the Inverclyde Council approves the making of the Traffic Regulation Order – The Inverclyde Council, Disabled Persons’ Parking Places (On Street) Order No. 2 2018, all as detailed in the copy of the proposed Order forming a supplement to the principal Minute hereof, and that the Head of Environmental and Public Protection and the Head of Legal and Property Services be authorised to take all necessary action in connection therewith. Appendix

Gerard Malone
Head of Legal and Property Services

4.0 BACKGROUND

- 4.1 Local Authorities are empowered to make Orders under the Road Traffic Regulation and Roads (Scotland) Acts 1984 and under the Council's Scheme of Administration the Head of Environmental and Public Protection is responsible for the making, implementation and review of Traffic Management Orders and Traffic Regulation Orders.
- 4.2 The provision of on-street parking places for use by disabled drivers, who are the holders of a Disabled Person's Badge, is regulated by The Disabled Persons' Parking Places (Scotland) Act 2009. Inverclyde Council is required to promote a Traffic Regulation Order to regulate the use of such parking places.
- 4.3 The Council is asked to note that, if approved, the Order may not be implemented until the making of the Order has been advertised to allow any persons who so wish a period of six weeks to question the validity of the Order in terms of the Road Traffic Regulation Act 1984.

5.0 IMPLICATIONS

Finance

- 5.1 There are no financial implications arising from this report.

Legal

- 5.2 There are no legal implications arising from this report.

Human Resources

- 5.3 There are no HR implications arising from this report.

Equalities

- 5.4 There are no equalities implications arising from this report.

Repopulation

- 5.5 There are no repopulation implications arising from this report.

6.0 CONSULTATIONS

- 6.1 The proposals have been advertised in the Greenock Telegraph and full details of the proposals have been made available for public inspection during normal office hours at the offices of the Head of Environmental and Public Protection, the Customer Service Centre, and at Central, Gourrock and Port Glasgow Libraries.
- 6.2 No objections have been received to the proposed Order.

7.0 LIST OF BACKGROUND PAPERS

- 7.1 None

THE INVERCLYDE COUNCIL
DISABLED PERSONS' PARKING PLACES
(ON-STREET) ORDER NO. 2 2018
TRAFFIC REGULATION ORDER

DRAFT

THE INVERCLYDE COUNCIL
DISABLED PERSONS' PARKING PLACES (ON-STREET)
ORDER NO. 2 2018

The Inverclyde Council in exercise of the powers conferred on them by Section 32(1) of the Road Traffic Regulation Act 1984 ("the Act") and of all other enabling powers and after consultation with the Chief Constable of Police Scotland in accordance with Part III of Schedule 9 to the Act hereby make the following Order.

1. This Order may be cited as "The Inverclyde Council Disabled Persons' Parking Places (On-Street) Order No. 2 2018" and shall come into operation on 12 November, 2018.
2. In this Order the following expressions have the meanings hereby assigned to them:-
 - "Council" means The Inverclyde Council or its successors as Roads Authority;
 - "disabled person's badge" means:
 - (a) a badge issued under Section 21 of the Chronically Sick and Disabled Persons Act 1970 (as amended);
 - (b) a badge issued under a provision of the law of Northern Ireland corresponding to that section; or
 - (c) a badge issued by any member State other than the United Kingdom for purposes corresponding to the purposes for which badges under that section are issued;and which has not ceased to be in force;
 - "disabled person's vehicle" means a vehicle lawfully displaying a disabled person's badge;
 - "parking attendant" means a person employed in accordance with Section 63A of the Act to carry out the functions therein;
 - "parking place" means an area of land specified by number and name in Columns 1 and 2 in the Schedule to this Order;
 - "traffic sign" means a sign prescribed or authorised under Section 64 of the Act; and
 - "vehicle" unless the context otherwise requires, means a vehicle of any description and includes a machine or implement of any kind drawn or propelled along roads whether or not by mechanical power.
3. The Schedule titled "Disabled Persons' Parking Places (On Street) Order No. 2 2018" forms the Schedule to this Order.
4. Each area of road which is described in the Schedule to this Order and the plans relative to this Order is hereby designated as a parking place.
5. The parking places shall only be used for the leaving of disabled persons' vehicles displaying a valid disabled person's badge.

6. The limits of each parking place shall be indicated on the carriageway as prescribed by The Traffic Signs Regulations and General Directions 2016.

7. Every vehicle left in any parking place shall stand such that no parking place is occupied by more than one vehicle and that every part of the vehicle is within the limits of the parking place provided that, where the length of a vehicle precludes compliance with this paragraph, such vehicle shall be deemed to be within the limits of a parking place if:-

the extreme front portion or, as the case may be, the extreme rear portion of the vehicle is within 300mm of an indication on the carriageway provided under this Order in relation to the parking place; and

the vehicle, or any part thereof, is not within the limits of any adjoining parking place.

8. Any person duly authorised by the Council or a police officer in uniform or a traffic warden or parking attendant may move or cause to be moved in case of any emergency, to any place they think fit, vehicles left in a parking place.

9. Any person duly authorised by the Council may suspend the use of a parking place or any part thereof whenever such suspension is considered reasonably necessary:-

for the purpose of facilitating the movement of traffic or promoting its safety;

for the purpose of any building operation, demolition, or excavation in or adjacent to the parking place or the laying, erection, alteration, removal or repair in or adjacent to the parking place of any sewer or of any main, pipe, apparatus for the supply of gas, water electricity or of any telecommunications apparatus, traffic sign or parking meter;

for the convenience of occupiers of premises adjacent to the parking place on any occasion of the removal of furniture from one office or dwellinghouse to another or the removal of furniture from such premises to a depository or to such premises from a depository;

on any occasion on which it is likely by reason of some special attraction that any street will be thronged or obstructed; or

for the convenience of occupiers of premises adjacent to the parking place at times of weddings or funerals or on other special occasions.

10. A police officer in uniform may suspend for not longer than twenty four hours the use of a parking place or part thereof whenever such suspension is considered reasonably necessary for the purpose of facilitating the movement of traffic or promoting its safety.

11. This Order insofar as it relates to the parking places to be revoked (R) and amended, as specified in the Schedule to this Order, partially revokes and amends The Inverclyde Council Disabled Persons' Parking Places (On-Street) Order Nos. 01/1997, 01/2002, 01/2004, 02/2008, 01/2013, 03/2016 and 01/2017 respectively.

Sealed with the Common Seal of The Inverclyde Council and subscribed for them and on their behalf by #####, Proper Officer, on the ##### day of #####, Two Thousand and Eighteen.

DRAFT

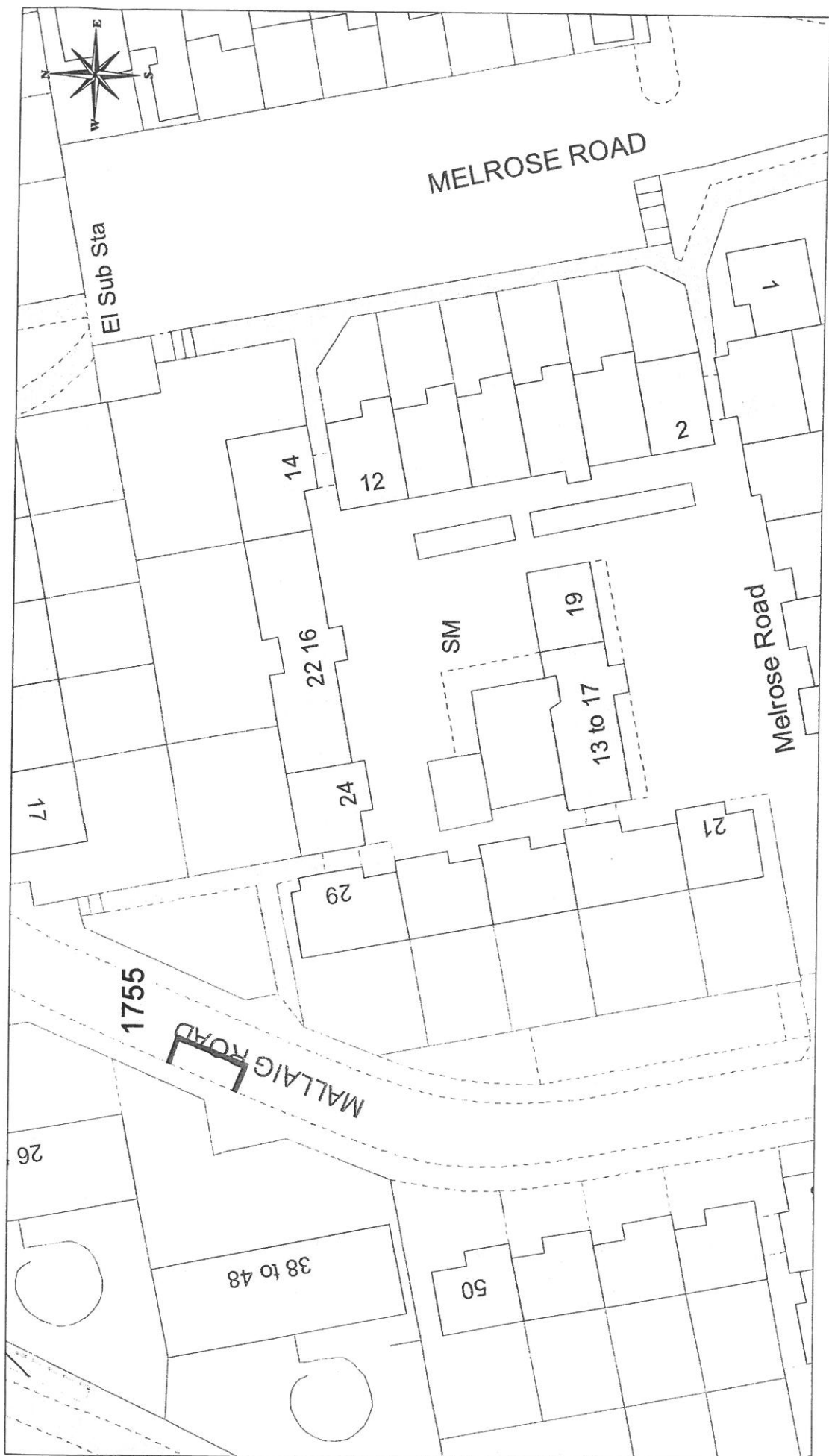
THE INVERCLYDE COUNCIL

**DISABLED PERSONS' PARKING PLACES
(ON-STREET) ORDER NO. 2 2018**

**Statement of Reasons for Proposing to Make
the above Order**

It is considered necessary in order to comply with The Disabled Persons' Parking Places (Scotland) Act 2009, Section 5, to make the above Order to provide assistance for disabled persons who hold a badge under the Disabled Persons (Badges for Motor Vehicles) (Scotland) Regulations 2000 as amended and by revoking those parking places no longer required to maximise street parking capacity.

Willie Rennie
Head of Environmental & Commercial Services
1 Ingleston Park
Cartsburn Street
GREENOCK
PA15 4UE



This material has been reproduced from
Ordnance Survey digital map data. With
the permission of the Controller of
Her Majesty's Stationery Office.
© Crown copyright.
License Number: 100033421

DISABLED PERSONS' PARKING PLACE
38 MALLAIG ROAD, PORT GLASGOW
PLACE No. 1755

Inverclyde
council
Environmental Services

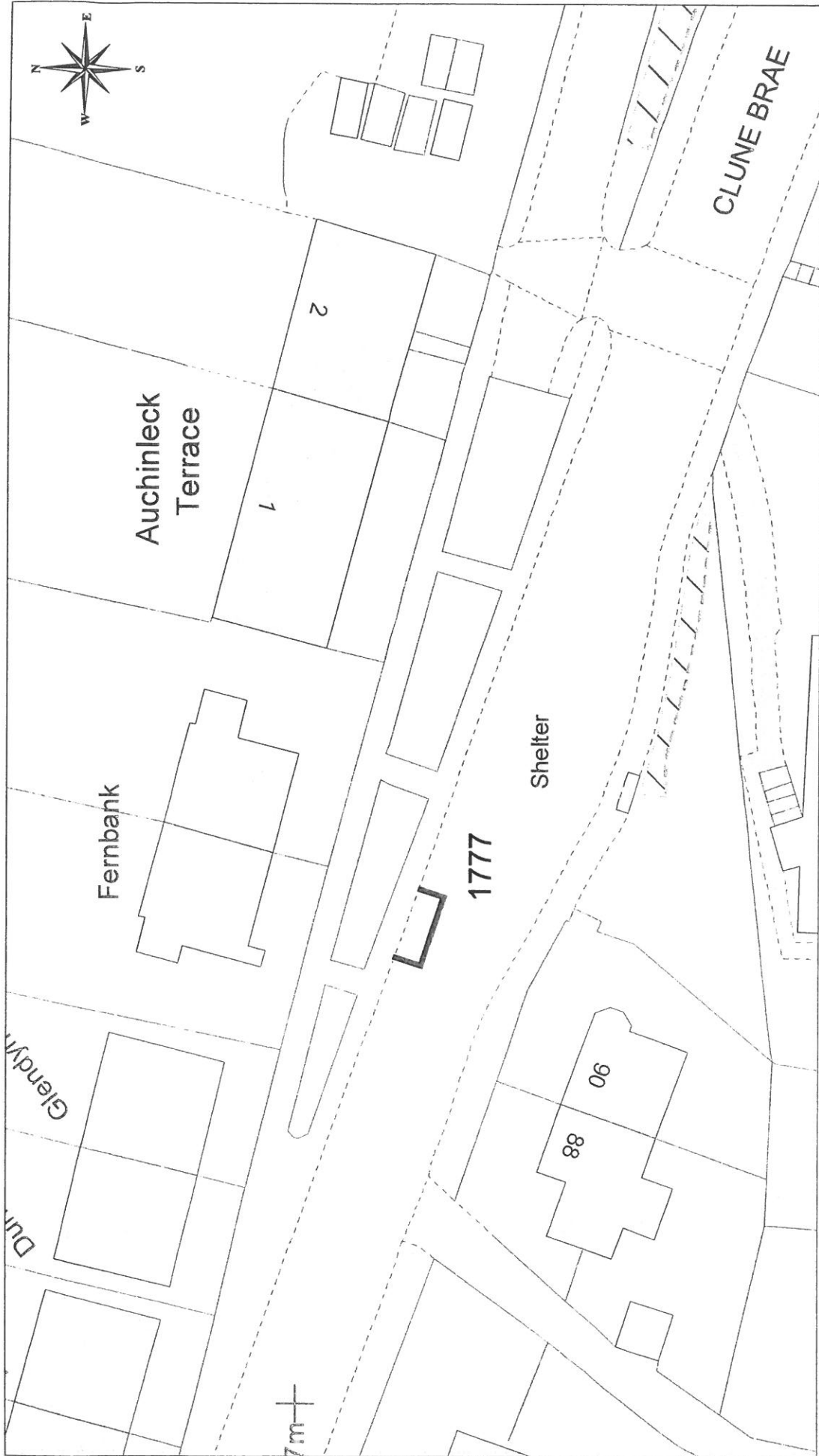
Regeneration & Environment
Corporate Director: Aubrey Fawcett
Municipal Buildings
Chyde Square
Greenock
Telf: 01475 712712
Fax: 01475 712731
aubrey.fawcett@inverclyde.gov.uk



Inverclyde
council
Environmental Services
Regeneration & Environment
Corporate Director: Aubrey Fawcett

Municipal Buildings
Clyde Square
Greenock
PA15 1LY
Tel: 01475 712712
Fax: 01475 712731
aubrey.fawcett@inverclyde.gov.uk

DISABLED PERSONS' PARKING PLACE
17 LEWIS ROAD, PORT GLASGOW
PLACE No. 1776



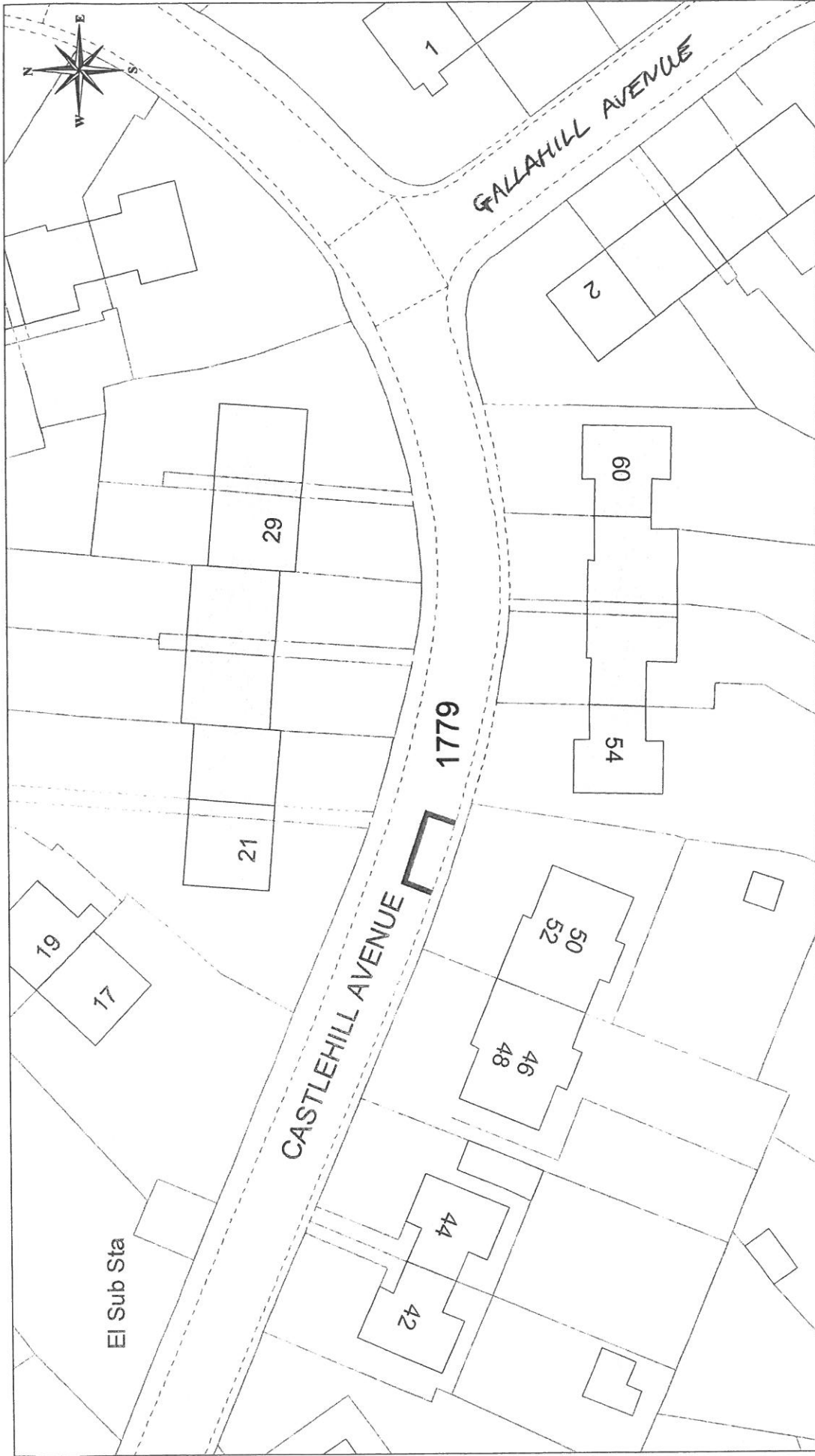
Inverclyde
 council
 Environmental Services

Regeneration & Environment
 Corporate Director: Aubrey Fawcett
 Municipal Buildings
 Clyde Square
 Greenock
 PA15 1LY
 Tel: 01475 712712
 Fax: 01475 712731
 aubrey.fawcett@inverclyde.gov.uk

DISABLED PERSONS' PARKING PLACE
CLUNEBRAEHEAD, PORT GLASGOW
PLACE No. 1777

OS Ordnance Survey
 Licensed System Supplier

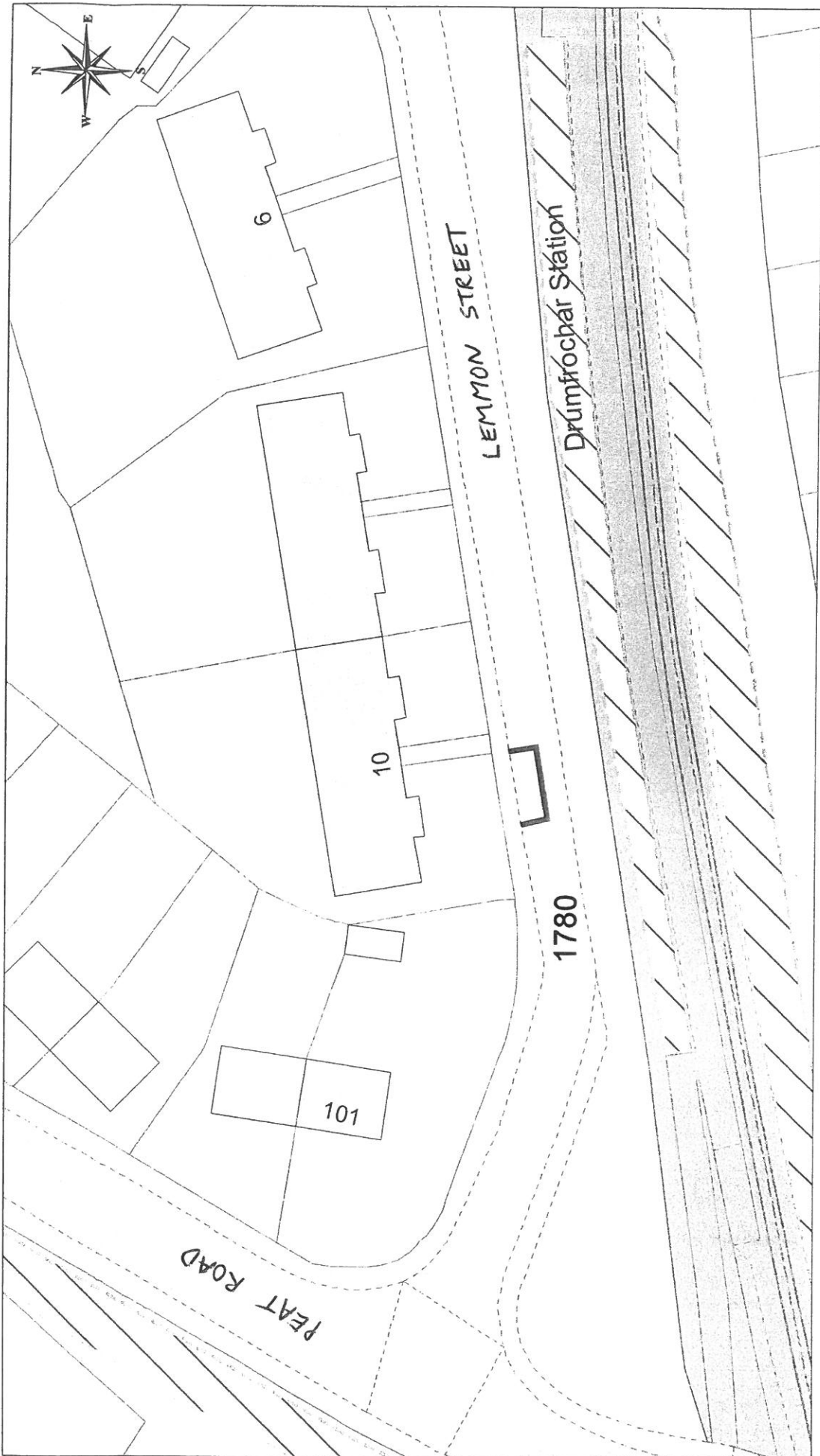
This material has been reproduced from Ordnance Survey data available with the permission of the Controller of Her Majesty's Stationery Office. © Crown Copyright. Licence Number: 10003421




 Ordnance Survey
 Licensed System Supplier
This material has been reproduced from Ordnance Survey digital map data with the permission of Ordnance Survey, Her Majesty's Stationery Office. © Crown copyright. Licence Number: 10003421

DISABLED PERSONS' PARKING PLACE
52 CASTLEHILL AVENUE, PORT GLASGOW
PLACE No. 1779

Inverclyde
 council
Environmental Services
 Regeneration & Environment
 Corporate Director: Aubrey Fawcett
 Municipal Buildings
 Greenock
 PA15 1LY
 Tel: 01475 712712
 Fax: 01475 712731
aubrey.fawcett@inverclyde.gov.uk



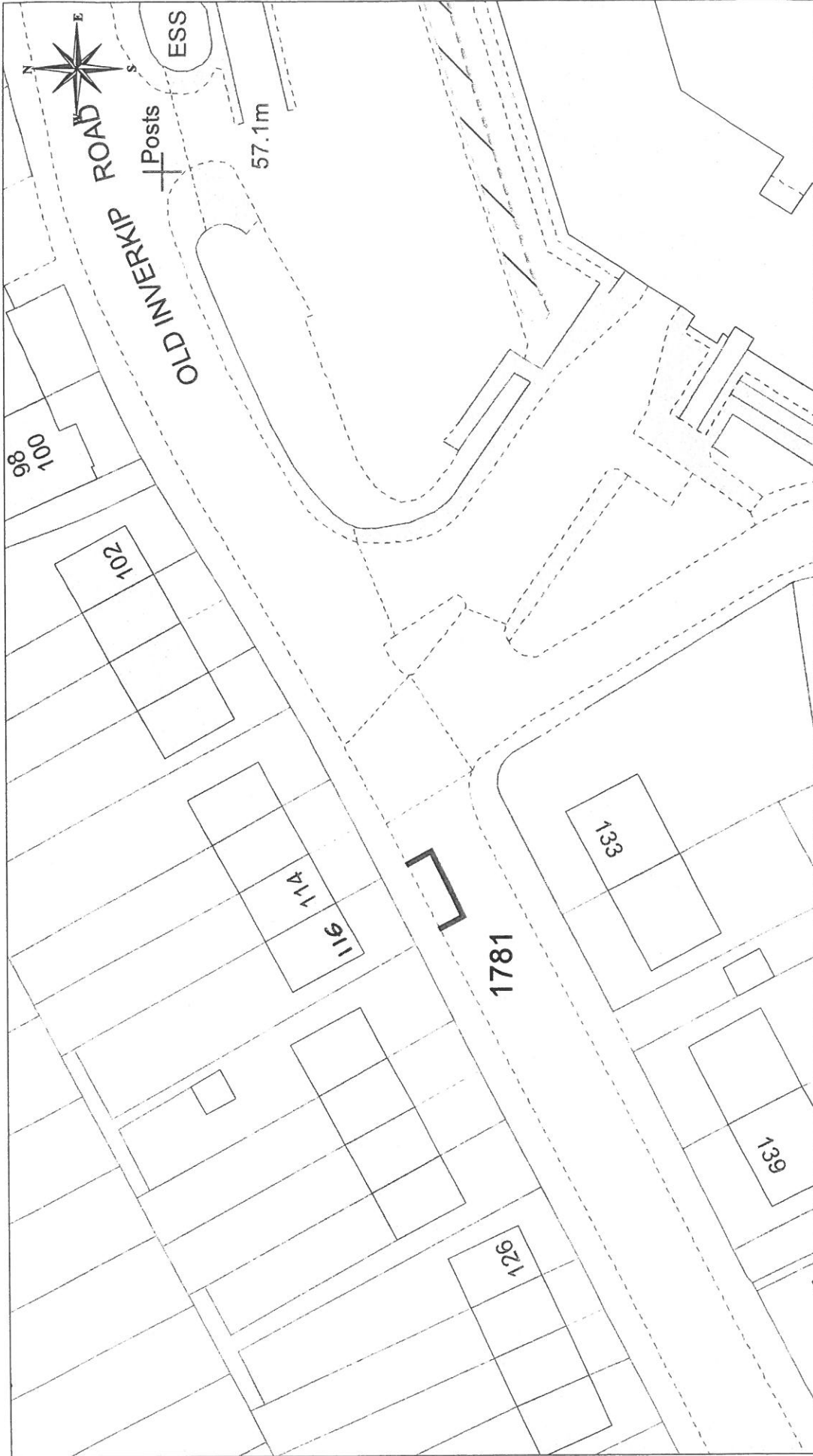
Ordnance Survey
 Licensed System Supplier

This material has been reproduced from the Ordnance Survey digital files with the permission of Ordnance Survey, Her Majesty's Stationery Office. © Crown copyright. Licence Number: 100023421

DISABLED PERSONS' PARKING PLACE
10A LEMMON STREET, GREENOCK
PLACE No. 1780

Inverclyde
 council
 Environmental Services

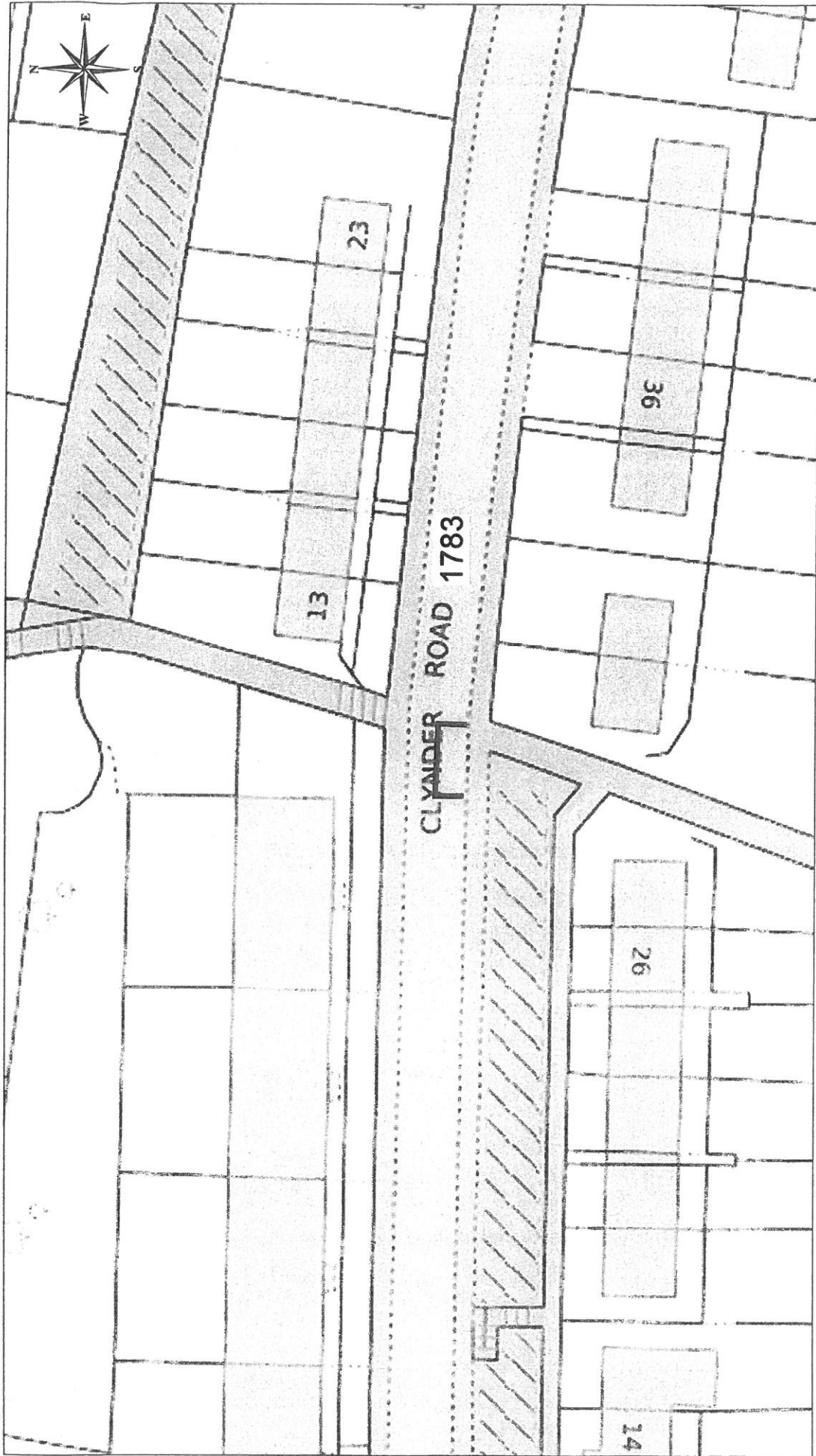
Regeneration & Environment
 Corporate Director: Aubrey Fawcett
 Municipal Buildings
 Clyde Square
 Greenock
 PA15 1LY
 Tel: 01475 712712
 Fax: 01475 712731
 aubrey.fawcett@inverclyde.gov.uk




Ordnance Survey
 Licensed System Supplier
This material has been supplied from Ordnance Survey digital map data with the permission of the Controller of Her Majesty's Stationery Office. © Crown copyright. License Number: 100033421

DISABLED PERSONS' PARKING PLACE
116 OLD INVERKIP ROAD, GREENOCK
PLACE No. 1781

Inverclyde
 council
Environmental Services
 Regeneration & Environment
 Corporate Director: Aubrey Fawcett
 Municipal Buildings
 Clyde Square
 Greenock
 PA15 1LJ
 Tel: 01475 712712
 Fax: 01475 712731
aubrey.fawcett@inverclyde.gov.uk



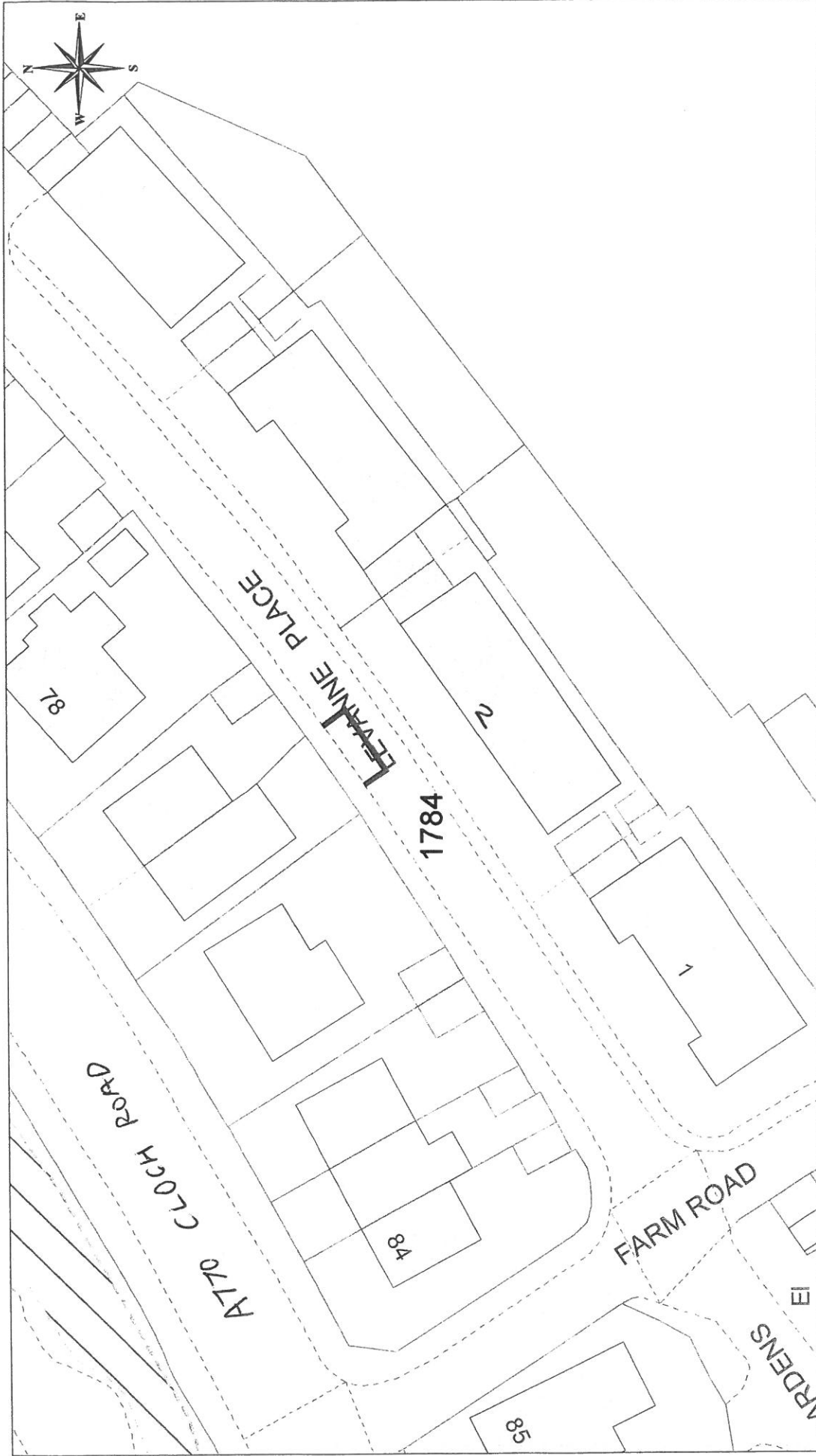
O/S Ordnance Survey
 Licensed System Supplier

This material has been reproduced from Ordnance Survey data with the permission of the Controller of Her Majesty's Stationery Office.
 Licence Number: 100029421

DISABLED PERSONS' PARKING PLACE
28 CLYNDER ROAD, GREENOCK
PLACE No. 1783

Inverclyde
 council
 Environmental Services

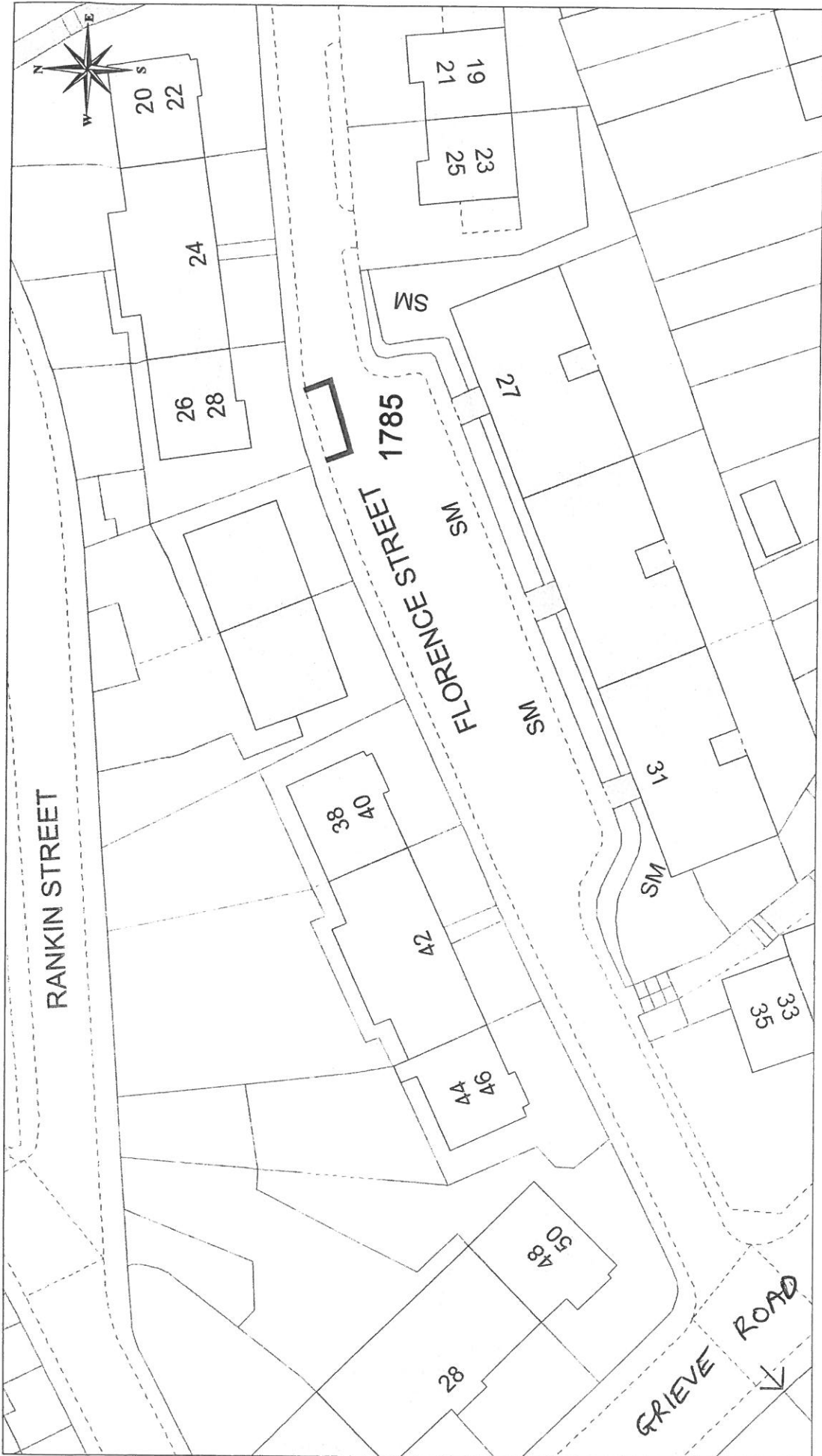
Regeneration & Environment
 Corporate Director: Aubrey Fawcett
 Municipal Buildings
 Clyde Square
 Greenock
 PA15 1LY
 Tel: 01475 712712
 Fax: 01475 712731
 aubrey.fawcett@inverclyde.gov.uk




 Ordnance Survey
 Licensed System Supplier
 This material has been reproduced from
 Ordnance Survey digital map data with
 the permission of the Controller of
 Her Majesty's Stationery Office.
 © Crown copyright. 100003421

DISABLED PERSONS' PARKING PLACE
2 LEVANNE PLACE, GOUROCK
PLACE No. 1784

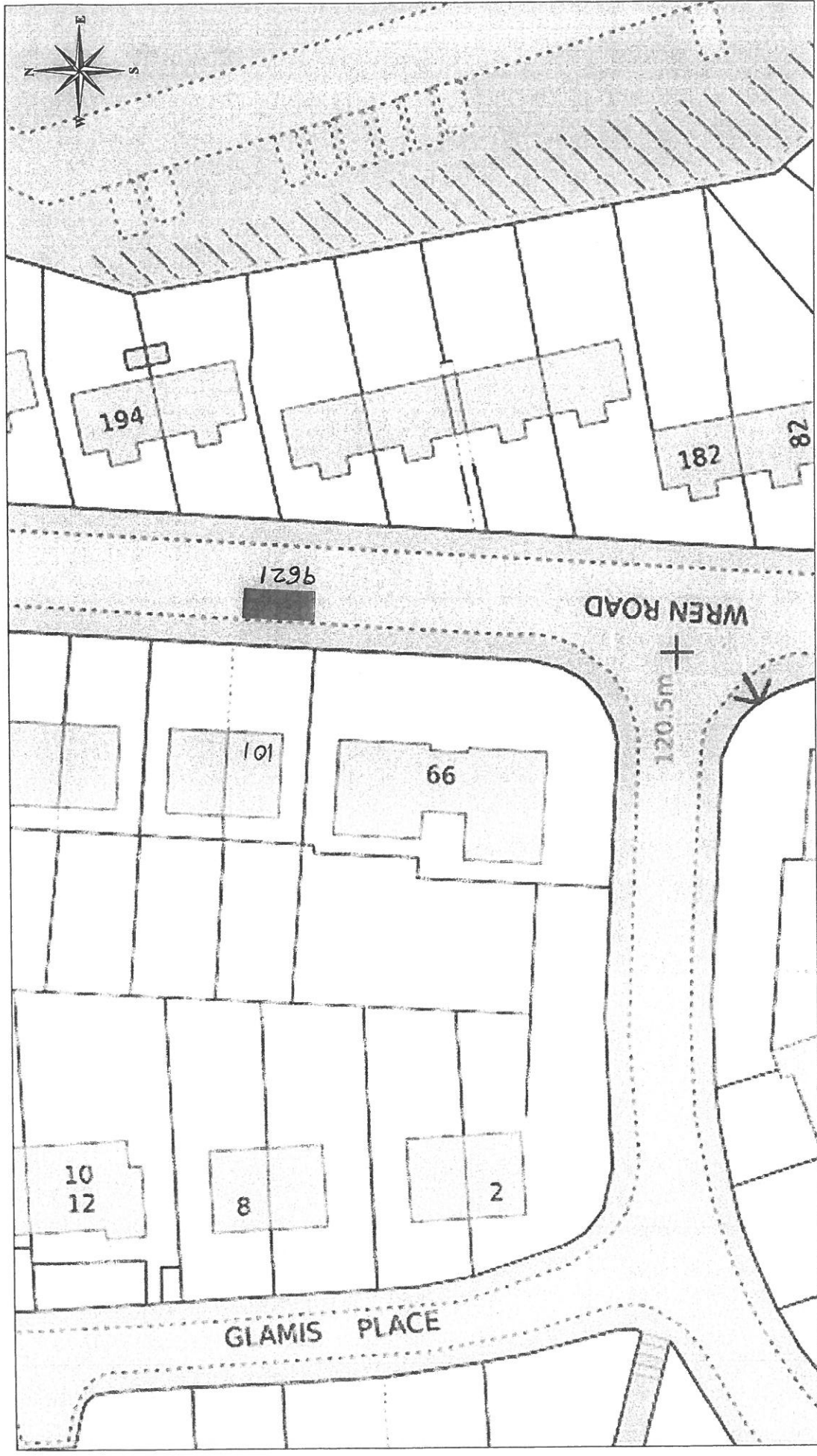
Inverclyde
 council
Environmental Services
 Regeneration & Environment
 Corporate Director: Aubrey Fawcett
 Municipal Buildings
 Clyde Square
 Greenock
 PA15 1JF 712712
 Tel: 01475 712731
 Fax: 01475 712731
 aubrey.fawcett@inverclyde.gov.uk




 Ordnance Survey
 Licensed System Supplier
This material has been reproduced from Ordnance Survey digital map data with the permission of Ordnance Survey in its capacity as the Crown's Cartographic Copyright Licensing Authority. © Crown copyright. License Number: 10003421

DISABLED PERSONS' PARKING PLACE
26 FLORENCE STREET, GREENOCK
PLACE No. 1785

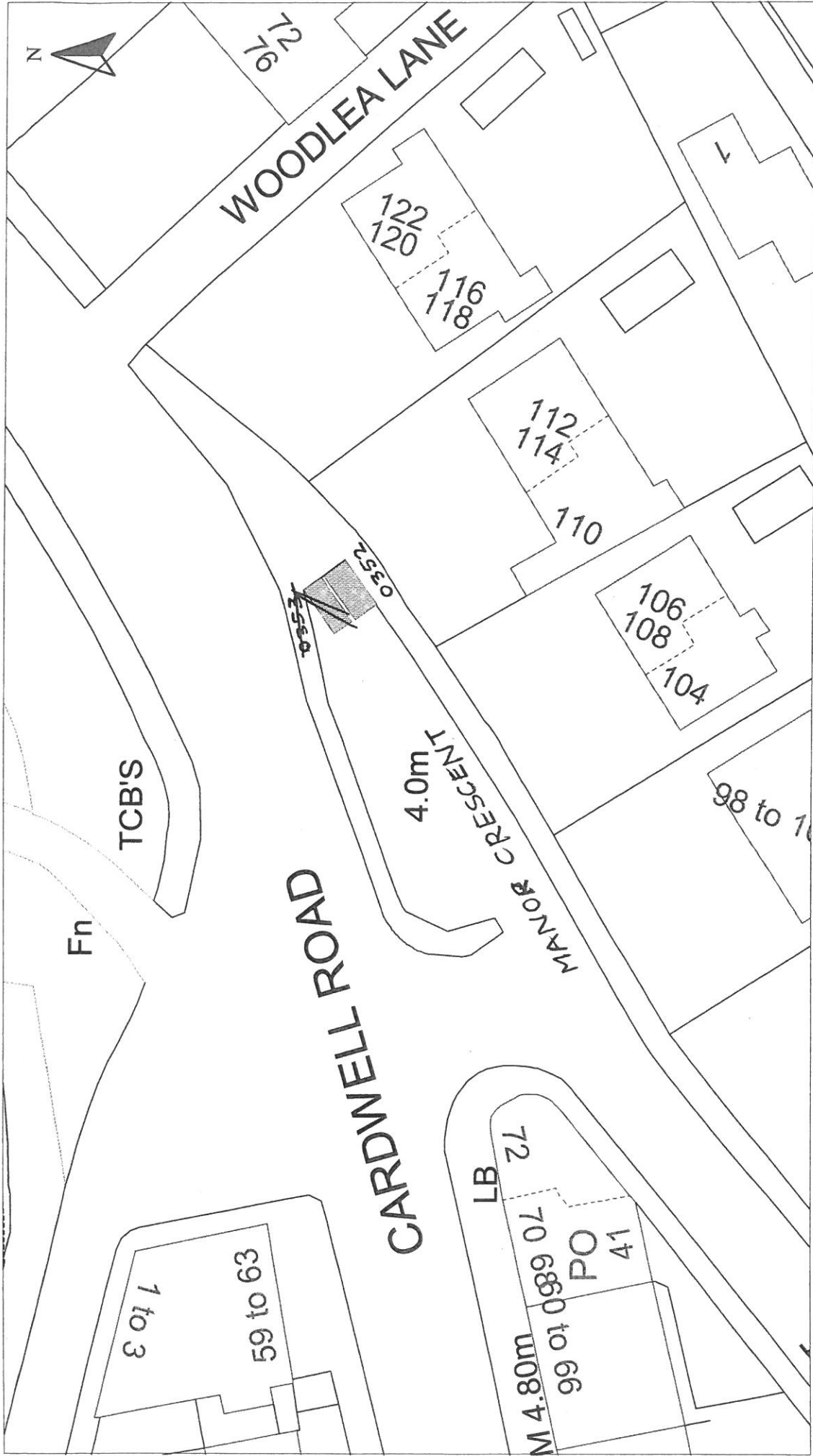
Inverclyde
 council
 Environmental Services
 Regeneration & Environment
 Corporate Director: Aubrey Fawcett
 Municipal Buildings
 Clyde Square
 Greenock
 G81 1LW
 Tel: 01475 712712
 Fax: 01475 712731
aubrey.fawcett@inverclyde.gov.uk



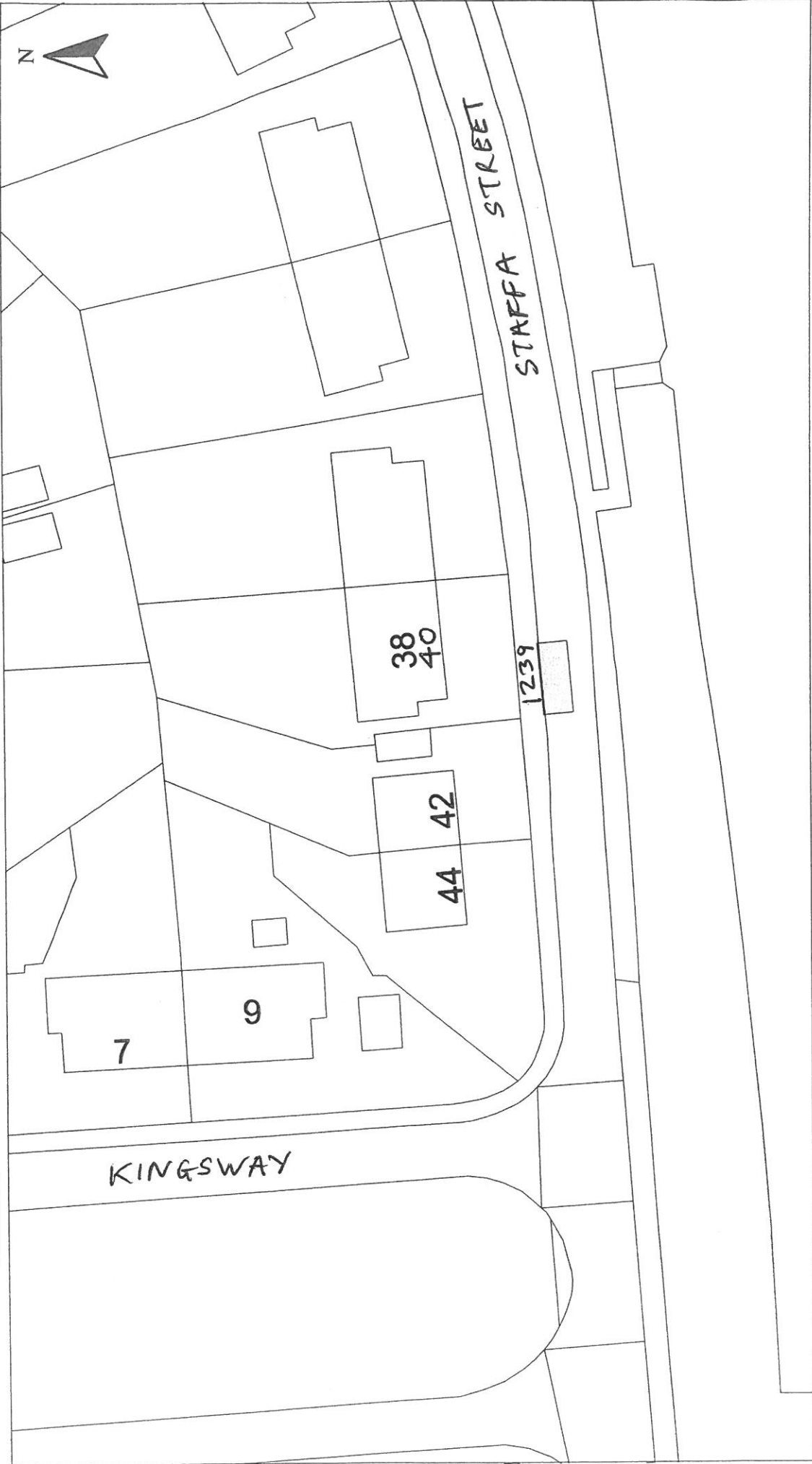

 Ordnance Survey
 Licensed System Supplier
This material has been reproduced from Ordnance Survey digital road data with the permission of the Controller of Her Majesty's Stationery Office. Licence Number: 100023421

DISABLED PERSONS' PARKING PLACE
101 WREN ROAD, GREENOCK
PLACE No. 9621 REVOCATION

Inverclyde
 council
Environmental Services
 Regeneration & Environment
 Corporate Director: Aubrey Fawcett
 Municipal Buildings
 Clyde Square
 Greenock
 PA15 1LY
 Tel: 01475 712712
 Fax: 01475 712731
 aubrey.fawcett@inverclyde.gov.uk



HEAD OF TRANSPORTATION AND ROADS R.J. SMALL B.Sc., C.Eng., M.I.C.E.		Date : JULY 2004	
Disabled Bays		Scale : 1:500	
71 EAST HAMILTON STREET GREENOCK, PA15 2UA		Prepared by : R. MACKAY	
Disabled Persons' Parking Place		Checked by : R. MACKAY	
108 MANOR CRESCENT, GOUROCK PLACE No. 0352 REVOCATION		Drawn by : R. MACKAY	
Reproduced from Ordnance Survey mapping with the permission of the Controller of Her Majesty's Stationery Office. Crown Copyright. Crown Unauthorised reproduction is illegal. Copyright and may result in prosecution or legal proceedings. Licence No. LA03097L		Approved by :	
		File No. : 19/12	



HEAD OF SERVICE
IAN MOFFAT

71 EAST HAMILTON STREET
GREENOCK, PA15 2UA

Disabled Bays

DISABLED PERSONS' PARKING PLACE
40 STAFFA STREET, GOUROCK
PLACE No. 1239 REVOCATION

Reproduced from Ordnance Survey mapping with the permission
of the Controller of Her Majesty's Stationery Office. Crown
Copyright. Unauthorised reproduction infringes Crown Copyright
and may result in prosecution or legal proceedings.



Licence No. LA03087L

Scale : 1:500

Prepared by : R. MACKAY

Drawn by : R. MACKAY

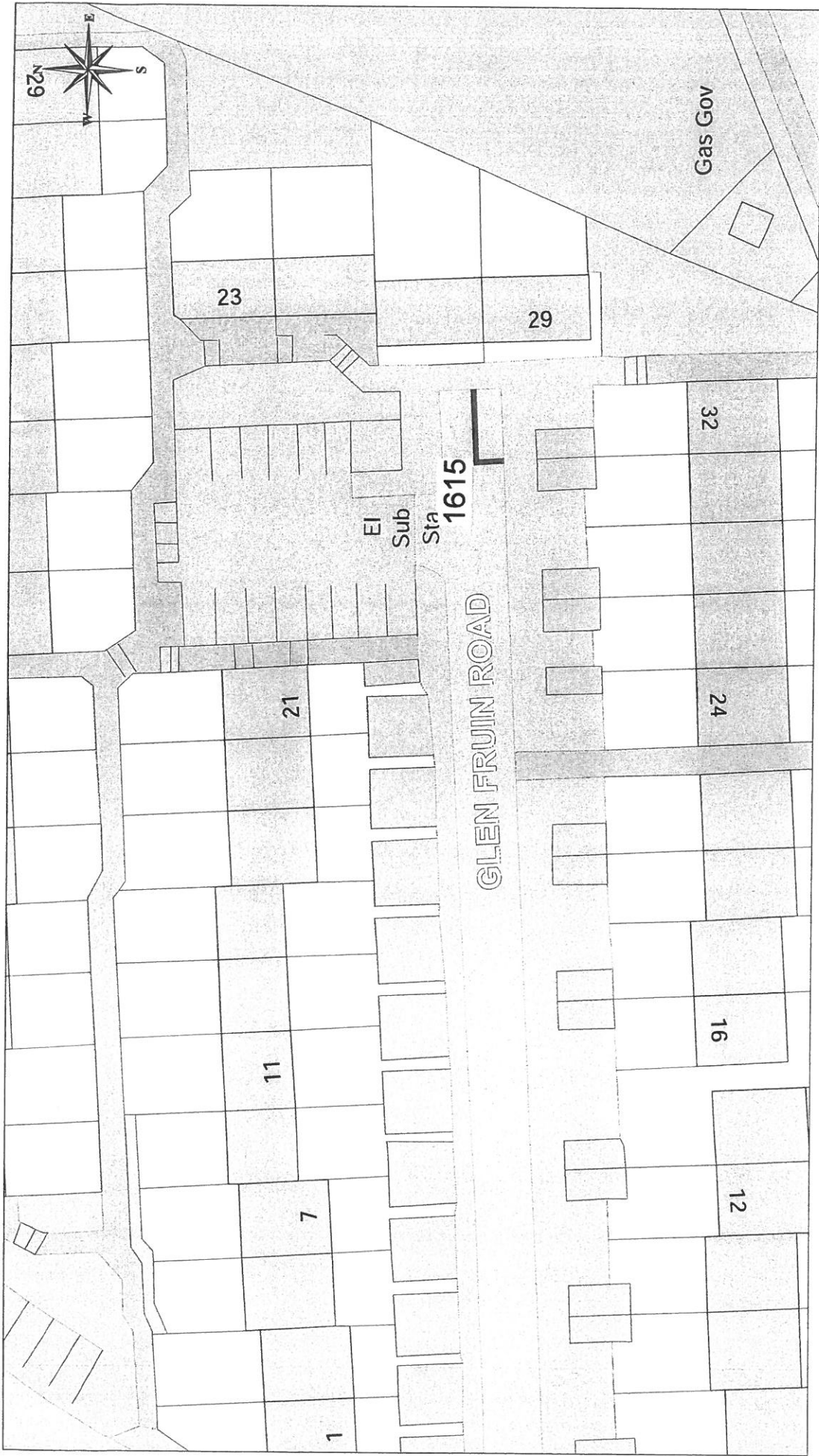
Drawing No. :

Date : NOV 2012

Checked by :

Approved by :

File No. : 19/12

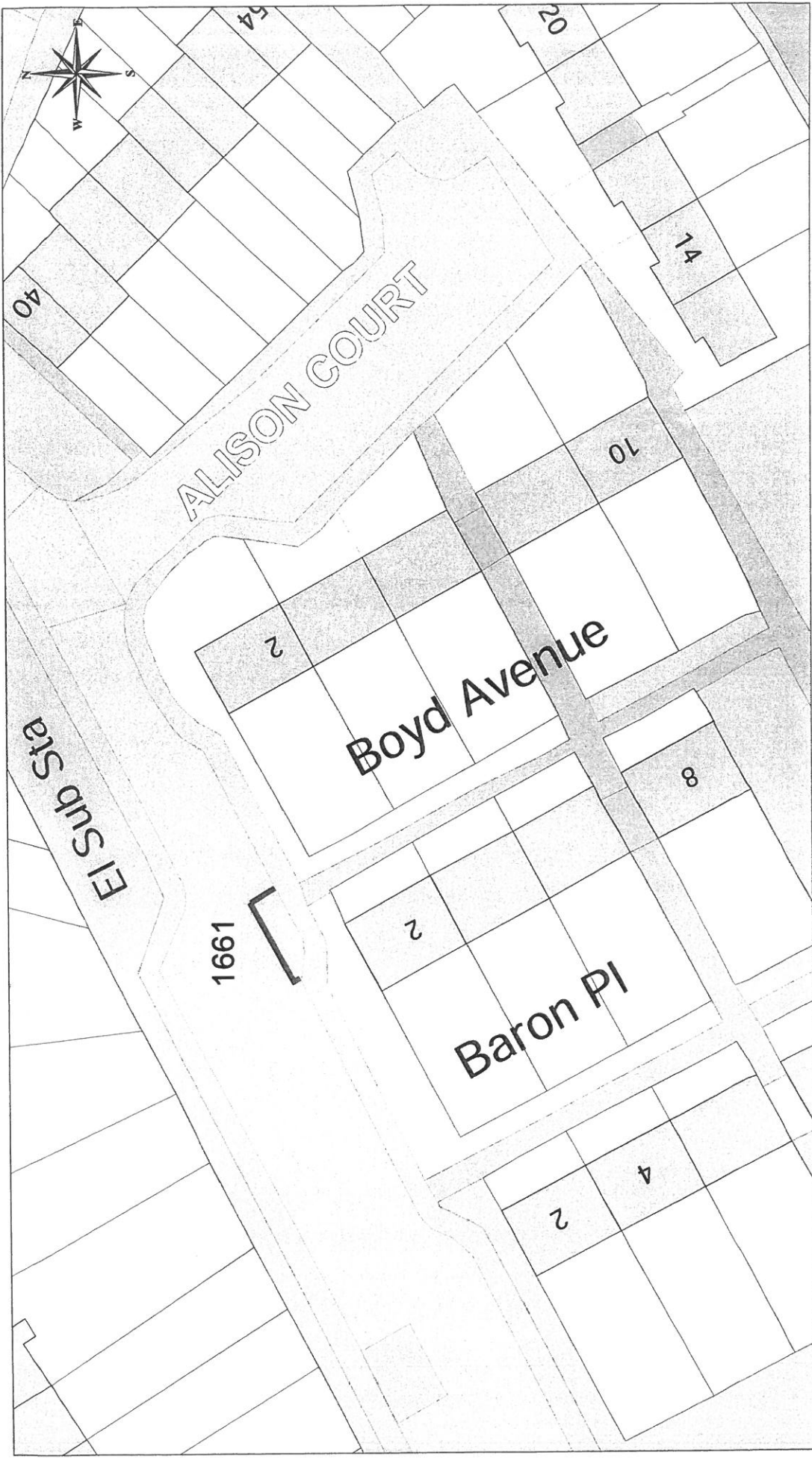


Inverclyde
council
Environmental Services

Regeneration & Environment
Corporate Director: Aubrey Fawcett
Municipal Buildings
Clyde Square
Greenock
PA15 1LJ 01475 712712
Fax: 01475 712731
aubrey.fawcett@inverclyde.gov.uk

DISABLED PERSONS' PARKING PLACE
29 GLEN FRUIN ROAD, GREENOCK
PLACE No. 1615 REVOCATION

Ordnance Survey
Licensed System Supplier
This material has been reproduced from
Ordnance Survey digital map data with
the permission of Her Majesty's Stationery Office.
© Crown copyright. Licence Number: 10023421




Ordnance Survey
 Licensed System Supplier
This material has been reproduced from Ordnance Survey digital products with the permission of the Controller of Her Majesty's Stationery Office. © Crown copyright. 10003421 License Number.

DISABLED PERSONS' PARKING PLACE
8 BOYD AVENUE, INVERKIP
PLACE No. 1661 REVOCATION

Inverclyde
 council
Environmental Services
 Regeneration & Environment
 Corporate Director: Aubrey Fawcett
 Municipal Buildings
 Clyde Square
 Greenock
 PA15 1JF, 712712
 Tel: 01475 712731
 aubrey.fawcett@inverclyde.gov.uk